

Mouse Monoclonal Antibody to

shc (phospho-Tyr 317)

clone 15E11

Order No.: 0100-100/shc-15E11

Size (µg) 100

Lot No.: 0100S



03/080507F

Isotype	Species Reactivity	Applications	Mol. Weight	Ref. Cell Line	Epitope	Immunogen
IgG1	human, mouse, dog	WB, IHC	46/52/66 kDa	HepG2	Phosphotyrosine 317 D P S pY V N V	phosphopeptide conjugated to KLH

Background and Specificity:

Mammalian cells can express three alternatively spliced isoforms of the shc adaptor protein: shc/p46, shc/p52 and shc/p66. shc/p66 contains a unique N-terminal protein domain. In addition to tyrosine phosphorylation of Tyr 239/240 and/or Tyr 317, shc/p66 is phosphorylated at serine 36, e.g. in response to EGF. Serine phosphorylation of shc/p66 impairs its ability to bind to the activated EGF receptor thus inhibiting EGF receptor downstream signalling pathways.

Mab shc-15E11 specifically recognizes shc when it is phosphorylated at Tyr 317.

Related Products

mab to shc (C-terminus)

#0151-100/shc-11F6

mab to shc (phospho-Tyr239/240)

#0093-100/shc-1E3

mab to shc/p66 (N-terminus)

#0180-100/shc/p66-24E4

mab to shc/p66 (phospho-Ser 36)

#0094-100/shc/p66-6E10

Purification:	The antibody was purified from serum-free cell culture supernatant by subsequent thiophilic adsorption and size exclusion chromatography.
Formulation:	lyophilized from 1 ml 2 x PBS / 0.09 % Na-azide / PEG and Sucrose.
Reconstitution:	Reconstitute with 1 ml H ₂ O (15 min, RT).
Stability:	For long-term storage, freeze lyophilizate upon arrival (-20°C). Upon reconstitution, aliquote and freeze in liquid nitrogen; reconstituted antibody can be stored frozen at -80°C up to 1 year. Thaw aliquots at 37°C. Thawed aliquots may be stored at 4°C up to 3 months.

Avoid repeated freeze / thaw cycles.

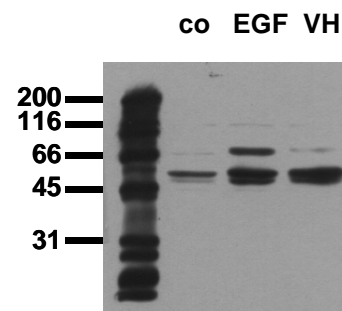
Positive Control:	#0812: Cell lysate from pervanadate-treated HepG2 cells
Immunoblotting:	0.5 µg/ml for HRPO/ECL detection Recommended blocking buffer: Casein/Tween 20 based blocking and blot incubation buffer, e.g. nanoTools product #3031-500/CPPT or #3031-3000/CPPT.

Immunoprecipitation: ND

Immunocytochemistry: ND

ELISA: ND

All products are supplied for research and investigational use only. Not for use in humans or laboratory animals.



Phosphospecificity

Whole cell extracts of control (co), EGF stimulated (EGF) or pervanadate treated (VH) A549 tumor cells were applied to SDS-PAGE (ca 20.000 cells per lane) and transferred to a PVDF membrane. The immunoblot was probed with mab shc-15E11 (0.5 µg/ml) for 1h at RT and developed by ECL (exp. time: 30 sec).