

MOUSE IgG whole molecule Texas Red™ conjugated - 010-0902
Code: 010-0902

Size: 1 mg

Product Description: MOUSE IgG whole molecule Texas Red™ conjugated - 010-0902

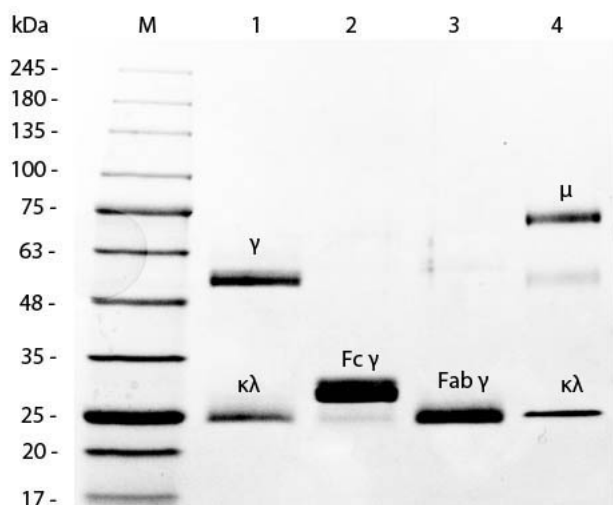
Concentration: 1.0 mg/mL by UV absorbance at 280 nm

PhysicalState: Lyophilized

Label	Texas Red®
Emission Wavelength	620
Excitation Wavelength	596
Buffer	0.02 M Potassium Phosphate, 0.15 M Sodium Chloride, pH 7.2
Reconstitution Volume	1.0 mL
Reconstitution Buffer	Restore with deionized water (or equivalent)
Stabilizer	10 mg/mL Bovine Serum Albumin (BSA) - Immunoglobulin and Protease free
Preservative	0.01% (w/v) Sodium Azide
Storage Condition	Store vial at 4° C prior to restoration. For extended storage aliquot contents and freeze at -20° C or below. Avoid cycles of freezing and thawing. Centrifuge product if not completely clear after standing at room temperature. This product is stable for several weeks at 4° C as an undiluted liquid. Dilute only prior to immediate use.
Synonyms	Mouse IgG whole molecule Texas Red™ conjugate
Application Note	Mouse IgG whole molecule Texas Red™ conjugation is designed for immunofluorescence microscopy, fluorescence based plate assays (FLISA) and fluorescent western blotting. This product is also suitable for multiplex analysis, including multicolor imaging, utilizing various commercial platforms.
Background	Mouse IgG purified protein (Immunoglobulin G) are antibody molecules. Mouse IgG is composed of four peptide chains — two heavy chains and two light chains. Mouse IgG has two antigen binding sites. Other Immunoglobulins may be described in terms of polymers with the IgG structure considered the monomer. Mouse IgG typically constitutes 75% of serum immunoglobulins. Mouse IgG molecules are synthesized and secreted by plasma B cells. Ideal as a negative control for Flow Cytometry, Western blotting, immunoprecipitation and immunohistochemistry applications.
Purity And Specificity	This product was prepared from normal serum by delipidation, salt fractionation, ion exchange chromatography followed by extensive dialysis against the buffer stated above. Assay by immunoelectrophoresis resulted in a single precipitin arc against anti-Mouse IgG and anti-Mouse Serum.
Assay Dilutions	User Optimized
Other Assays	User Optimized
Expiration	Expiration date is one (1) year from date of opening.
Related Products	
	010-0102 MOUSE IgG whole molecule - 010-0102
	610-4302 Anti-MOUSE IgG (H&L) (RABBIT) Antibody Peroxidase Conjugated - 610-4302
	611-1302 Anti-RABBIT IgG (H&L) (GOAT) Antibody Peroxidase Conjugated - 611-1302
	BSA-50 BOVINE SERUM ALBUMIN - Fraction V (Immunoglobulin and Protease Free) - BSA-50

Images

SDS-PAGE of Mouse IgG Whole Molecule Texas Red™ Conjugated (p/n 010-0902). Lane 1: 5 µL Opal Prestained Marker (p/n MB-210-0500). Lane 2: Reduced Mouse IgG Whole Molecule Texas Red™ Conjugated (p/n 010-0902). Lane 3: Reduced Mouse F(c) Fragment (p/n 010-0103). Lane 4: Reduced Mouse F(ab) Fragment (p/n 010-0105). Lane 5: Mouse IgM Kappa Myeloma Protein (p/n 010-0107). Load: 1 µg per lane. Predicted/Observed size: IgG at 50 and 25 kDa; F(c) at 25 kDa; F(ab) at 25 kDa; IgM K at 70 and 23 kDa. Observed F(c) Fragment migrates slightly higher.



Disclaimer

This product is for research use only and is not intended for therapeutic or diagnostic applications. Please contact a technical service representative for more information. All products of animal origin manufactured by Rockland Immunochemicals are derived from starting materials of North American origin. Collection was performed in United States Department of Agriculture (USDA) inspected facilities and all materials have been inspected and certified to be free of disease and suitable for exportation. All properties listed are typical characteristics and are not specifications. All suggestions and data are offered in good faith but without guarantee as conditions and methods of use of our products are beyond our control. All claims must be made within 30 days following the date of delivery. The prospective user must determine the suitability of our materials before adopting them on a commercial scale. Suggested uses of our products are not recommendations to use our products in violation of any patent or as a license under any patent of Rockland Immunochemicals, Inc. If you require a commercial license to use this material and do not have one, then return this material, unopened to: Rockland Inc., P.O. BOX 5199, Limerick, Pennsylvania, USA.