

## Human COLLAGEN Type I - 009-001-103

**Code:** 009-001-103

**Size:** 500 µg

**Product Description:** Human COLLAGEN Type I - 009-001-103

**Concentration:** 1.0 mg/ml by dry weight

**PhysicalState:** Liquid (sterile filtered)

<b>Label</b>	Unconjugated
<b>Gene Name</b>	COL1A1
<b>Species Reactivity</b>	human
<b>Buffer</b>	0.5 M Sodium Acetate, pH 4.5
<b>Stabilizer</b>	None
<b>Preservative</b>	0.01% (w/v) Sodium Azide
<b>Storage Condition</b>	Store vial at 4° C prior to opening. This product is stable at 4° C as an undiluted liquid. Dilute only prior to immediate use.
<b>Synonyms</b>	Type I collagen, collagen 1, human collagen
<b>Application Note</b>	Human Collagen type I purified protein standard is used as a control in ELISA and western blot. Collagen type I is recognized by type specific anti-collagen antibodies that recognize a native three-dimensional structure.
<b>Background</b>	Collagen type I is the fibrillar collagen found in most connective tissues, including cartilage. Collagen type I is a protein that strengthens and supports many tissues in the body, including cartilage, bone, tendon, skin and the white part of the eye (sclera).
<b>Purity And Specificity</b>	Human Collagen type I has been prepared from human placenta and is chromatographically and immunologically pure. This product is free from other collagens, human serum proteins and non-collagen extracellular matrix proteins. Human Collagen type I reacts with anti-Collagen Type I. Reaction of Human Collagen type I with Rockland's anti-Collagen II, III, IV, V or VI is negligible (typically less than 1% cross-reactivity was detected by ELISA).
<b>Assay Dilutions</b>	User Optimized
<b>ELISA</b>	1:10,000
<b>Western Blot</b>	1:1000
<b>Immunohistochemistry</b>	1:100-1:500
<b>Other Assays</b>	User Optimized
<b>Expiration</b>	Expiration date is six (6) months from date of opening.

**Related Products**

009-001-104	Human COLLAGEN Type II (ADULT KNEE CARTILAGE) - 009-001-104
009-001-105	Human COLLAGEN Type III - 009-001-105
009-001-106	Human COLLAGEN Type IV - 009-001-106
009-001-107	Human COLLAGEN Type V - 009-001-107

**Related Links**

UniProtKB - P02452

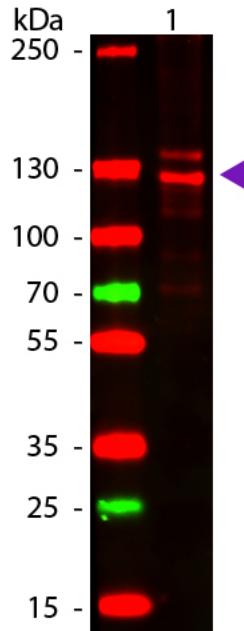
<http://www.uniprot.org/uniprot/P02452>

 NCBI - [http://www.ncbi.nlm.nih.gov/protein/NP\\_000079.2](http://www.ncbi.nlm.nih.gov/protein/NP_000079.2)

## Images

1

Western blot of Human Collagen Type I. Lane 1: Human Collagen Type I. Lane 2: None. Load: 50 ng per lane. Primary antibody: Collagen Type I antibody at 1:1,000 overnight at 4°C. Secondary antibody: DyLight™ 649 rabbit secondary antibody at 1:20,000 for 30 min at RT. Block: MB-070 for 30 min at RT. Predicted/Observed size: 139 & 130 kDa, 139 & 130 kDa for Collagen Type I. Other Band(s): Collagen Type I splice variants and isoforms.



## Disclaimer

This product is for research use only and is not intended for therapeutic or diagnostic applications. Please contact a technical service representative for more information. All products of animal origin manufactured by Rockland Immunochemicals are derived from starting materials of North American origin. Collection was performed in United States Department of Agriculture (USDA) inspected facilities and all materials have been inspected and certified to be free of disease and suitable for exportation. All properties listed are typical characteristics and are not specifications. All suggestions and data are offered in good faith but without guarantee as conditions and methods of use of our products are beyond our control. All claims must be made within 30 days following the date of delivery. The prospective user must determine the suitability of our materials before adopting them on a commercial scale. Suggested uses of our products are not recommendations to use our products in violation of any patent or as a license under any patent of Rockland Immunochemicals, Inc. If you require a commercial license to use this material and do not have one, then return this material, unopened to: Rockland Inc., P.O. BOX 5199, Limerick, Pennsylvania, USA.