

## Mouse Monoclonal Antibody to

# SAPK2 $\delta$ /p38 $\delta$ (N-terminus)

## clone 5H7

Order No.: **0053-100/SAPK2d-5H7**

Size ( $\mu$ g) 100

Lot No.: 0053S



04/080507F

Isotype	Species Reactivity	Applications	Mol. Weight	Ref.Cell Line	Epitope	Immunogen
IgG1	human	WB, IHC	42 kDa	A431	N-terminus, interacts with SAPK2 (p38/CSBP)	N-terminal peptide conjugated to KLH

### Background and Specificity:

Stress-activated Protein Kinases (SAPKs) are strongly activated in response to adverse stimuli such as heat and osmotic shock, UV light and other DNA-damaging reagents, and inhibitors of protein synthesis. They are also activated strongly in response to agonists that are released or produced under conditions of stress, such as proinflammatory cytokines. Stress-activated Protein Kinase 2 (SAPK2/p38) phosphorylates conserved Ser - Pro or Thr - Pro peptide motifs.

**Mab SAPK2d-5H7** specifically interacts with the N-terminus of SAPK2 $\delta$ .

### Related Products

- mab to SAPK1 $\alpha$ /jnk2 (N-terminus)**  
#0190-100/SAPK1a-12C5
- mab to SAPK1 $\gamma$ /jnk1 (N-terminus)**  
#0200-100/SAPK1g-5D10
- mab to SAPK1/2 (T - G/P - pY)**  
#0041-100/SAPK1/2-9H8
- mab to SAPK2 $\alpha$  (N-terminus)**  
#0034-100/SAPK2a-13D5 (crossreaction with Mxi2)  
#0035-100/SAPK2a-20B11 (no crossreaction with Mxi2)
- mab to MAPK 1/2 (pT-E-pY)**  
#0012-100/MAPK-12D4
- mab to MAPK 2 (C-terminus)**  
#0011-100/MAPK2-6G11
- mab to MAPK 2 (N-terminus)**  
#0178-100/MAPK2-6H3
- mab to MAPK 2 (internal sequence)**  
#0239-100/MAPK2-12A4
- mab to MAPK7/erk5**  
#0223-100/MAPK7/erk5-12F2
- mab to Mxi 2 (N-terminus)**  
0046-100/Mxi-2F2

**Purification:** The antibody was purified from serum-free cell culture supernatant by subsequent thiophilic adsorption and size exclusion chromatography.

**Formulation:** lyophilized from 1 ml PBS / 0.1 % Na-azide / PEG and Sucrose.

**Reconstitution:** Reconstitute with 1 ml H<sub>2</sub>O (15 min, RT).

**Stability:** For long-term storage, freeze lyophilizate upon arrival (-20°C). Upon reconstitution, aliquote and freeze in liquid nitrogen; reconstituted antibody can be stored frozen at -80°C up to 1 year. Thaw aliquots at 37°C. Thawed aliquots may be stored at 4°C up to 3 months.

**Avoid repeated freeze / thaw cycles.**

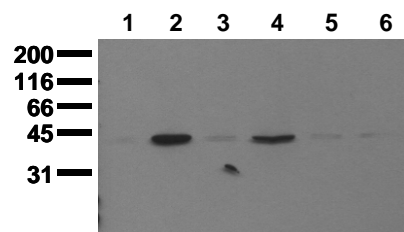
**Positive Control:** #0831: Cell lysate from untreated A431 cells

**Immunoblotting:** 0.5  $\mu$ g/ml for HRPO/ECL detection  
**Recommended blocking buffer:** Casein/Tween 20 based blocking and blot incubation buffer, e.g. nanoTools product #3031-500/CPPT or #3031-3000/CPPT.

**Immunoprecipitation:** ND

**Immunocytochemistry:** ND

**ELISA:** use at 0.05  $\mu$ g/ml



### Detection of endogenous SAPK2 delta

Whole cell lysates of serum starved tumor cells (20.000 cells per lane) were applied to SDS-PAGE and transferred to a PVDF membrane. The immunoblot was probed with mab SAPK2d-5H7 (0.5  $\mu$ g/ml) for 1h at RT and developed by ECL (exp. time: 30 sec).

lane 1: MDA-MB 231; lane 2: MDA-MB 468; lane 3: MCF-7; lane 4: T47D; lane 5: SW480; lane 6: SW620

**All products are supplied for research and investigational use only. Not for use in humans or laboratory animals.**