

Mouse Monoclonal Antibody to

PKB/Akt (dephospho-Ser 473)

clone 11A11

Order No.: 0049-100/PKB-11A11
Size (µg) 100
Lot No.: 0049S



03/080507F

Isotype	Species Reactivity	Applications	Mol. Weight	Ref. Cell Line	Epitope	Immunogen
IgG1	human, mouse, rat, dog	WB, ELISA, IHC	60 kDa	HepG2	C-terminus	peptide conjugated to KLH

Background and Specificity:

The PKB (RAC/akt) protein kinases are a family of second messenger-regulated serine/threonine kinases. Three mammalian isoforms (alpha, beta, gamma) have been identified so far; the alpha-isoform being the cellular homologue of the v-akt oncogene. Stimulation of cells with growth factors leads to activation of PKB by a phosphoinositide-3-kinase dependent signal transduction pathway.

Mab PKB-11A11 specifically recognizes PKB when it is dephosphorylated at serine 473.

Related Products

mab to PKB (phospho-Ser 473)

#0108-100/PKB-11E6

mab to PKB (C-terminus)

#0119-100/PKB-5C10

mab to PKB α (Akt-1)

#0144-100/PKBa-5G12

mab to PKB β (Akt-2)

#0179-100/PKBb-8B7

mab to Raptor

#0255-100/Raptor-10E10

mab to Rictor

#0250-100/Rictor-1G11

Purification: The antibody was purified from serum-free cell culture supernatant by subsequent thiophilic adsorption and size exclusion chromatography.

Formulation: lyophilized from 1 ml 2 x PBS / 0.09 % Na-azide / PEG and Sucrose.

Reconstitution: Reconstitute with 1 ml H₂O (15 min, RT).

Stability: For long term storage, freeze lyophilizate upon arrival (-20°C): Aliquote and freeze in liquid nitrogen; reconstituted antibody can be stored frozen at -80°C up to 1 year. Thaw aliquots at 37°C. Thawed aliquots may be stored at 4°C up to 3 months.

Avoid repeated freeze / thaw cycles.

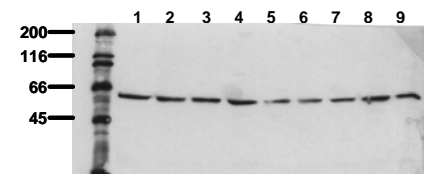
Positive Control: #0811: Cell lysate from untreated HepG2 cells.

Immunoblotting: 0.5 µg/ml for HRPO/ECL detection
Recommended blocking buffer: Casein/Tween 20 based blocking and blot incubation buffer, e.g. nanoTools product #3031-500/CPPT or #3031-3000/CPPT.

Immunoprecipitation: ND

Immunocytochemistry: ND

ELISA: use at 0.05 µg/ml



Detection of endogenous PKB

Whole cell lysates of serum starved tumor cells (20.000 cells per lane) were applied to SDS-PAGE and transferred to a PVDF membrane. The immunoblot was probed with mab PKB-11A11 (1 µg/ml) for 1h at RT and developed by ECL (exp. time: 30 sec).

lane 1: HeLa; lane 2: HepG2; lane 3: HEK293; lane 4: SH-SY5Y; lane 5: MDCK; lane 6: PC12; lane 7: CMT; lane 8: Neuro 2A; lane 9: 3T3

All products are supplied for research and investigational use only. Not for use in humans or laboratory animals.