

## Mouse Monoclonal Antibody to

# SAPK2 $\alpha$ /p38 $\alpha$

## clone 13D5

Order No.: **0034-100/SAPK2 $\alpha$ -13D5**

Size ( $\mu$ g) 100

Lot No.: 0034S



04/080507F

Isotype	Species Reactivity	Applications	Mol. Weight	Ref.Cell Line	Epitope	Immunogen
IgG1	human, mouse, rat, dog	WB, ELISA, IP, ICC	38 kDa	SW480	N-terminus, interacts with SAPK2 (p38/CSBP)	peptide conjugated to KLH

### Background and Specificity:

Stress-activated Protein Kinases (SAPKs) are strongly activated in response to adverse stimuli such as heat and osmotic shock, UV light and other DNA-damaging reagents, and inhibitors of protein synthesis. They are also activated strongly in response to agonists that are released or produced under conditions of stress, such as proinflammatory cytokines. Stress-activated Protein Kinase 2 (SAPK2/p38) phosphorylates conserved Ser - Pro or Thr - Pro peptide motifs.

Mab SAPK2a-13D5 specifically interacts with the N-terminus of SAPK2 / p38 / CSBP.

### Related Products

#### mab to SAPK1 $\alpha$ /jnk2 (N-terminus)

#0190-100/SAPK1a-12C5

#### mab to SAPK1 $\gamma$ /jnk1 (N-terminus)

#0200-100/SAPK1g-5D10

#### mab to SAPK1/2 (T - G/P - pY)

#0041-100/SAPK1/2-9H8

#### mab to SAPK2 $\alpha$ (N-terminus)

#0035-100/SAPK2a-20B11

#### mab to SAPK2 $\delta$ (N-terminus)

#0053-100/SAPK2d-5H7

#### mab to MAPK 1/2 (pT-E-pY)

#0012-100/MAPK-12D4

#### mab to MAPK 2 (C-terminus)

#0011-100/MAPK2-6G11

#### mab to MAPK 2 (N-terminus)

#0178-100/MAPK2-6H3

#### mab to MAPK 2 (internal sequence)

#0239-100/MAPK2-12A4

#### mab to MAPK7/erk5

#0223-100/MAPK7/erk5-12F2

#### mab to Mxi 2 (N-terminus)

0046-100/Mxi-2F2

<b>Purification:</b>	The antibody was purified from serum-free cell culture supernatant by subsequent thiophilic adsorption and size exclusion chromatography.
<b>Formulation:</b>	lyophilized from 1 ml PBS / 0.1 % Na-azide / PEG and Sucrose.
<b>Reconstitution:</b>	Reconstitute with 1 ml H <sub>2</sub> O (15 min, RT).
<b>Stability:</b>	For long-term storage, freeze lyophilizate upon arrival (-20°C). Upon reconstitution, aliquote and freeze in liquid nitrogen; reconstituted antibody can be stored frozen at -80°C up to 1 year. Thaw aliquots at 37°C. Thawed aliquots may be stored at 4°C up to 3 months.

**Avoid repeated freeze / thaw cycles.**

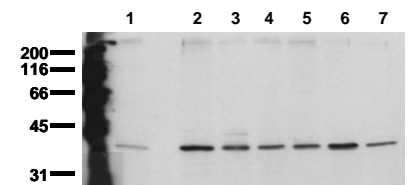
**Positive Control:** #0801: Cell lysate from untreated SW480 cells

**Immunoblotting:** 1  $\mu$ g/ml for HRPO/ECL detection  
**Recommended blocking buffer:** Casein/Tween 20 based blocking and blot incubation buffer, e.g. nanoTools product #3031-500/CPPT or #3031-3000/CPPT.

**Immunoprecipitation:** use at 1 - 10  $\mu$ g per 10<sup>6</sup> pervanadate-treated A431 cells

**Immunocytochemistry:** ND

**ELISA:** use at 0.05  $\mu$ g/ml



#### Detection of endogenous SAPK2alpha

Whole cell lysates of serum starved tumor cells (20.000 cells per lane) were applied to SDS-PAGE and transferred to a PVDF membrane. The immunoblot was probed with mab SAPK2a-13D5 (0.5  $\mu$ g/ ml) for 1h at RT and developed by ECL (exp. time: 30 sec).

lane 1: A431; lane 2: SW480; lane 3: SW620; lane 4: HT29; lane 5: MCF7; lane 6: MDA-MB231; lane 7: T47D

**All products are supplied for research and investigational use only. Not for use in humans or laboratory animals.**