

CHICKEN IgG F(c) fragment Biotin conjugated - 003-0603
Code: 003-0603

Size: 1 mg

Product Description: CHICKEN IgG F(c) fragment Biotin conjugated - 003-0603

Concentration: 1.0 mg/mL by UV absorbance at 280 nm

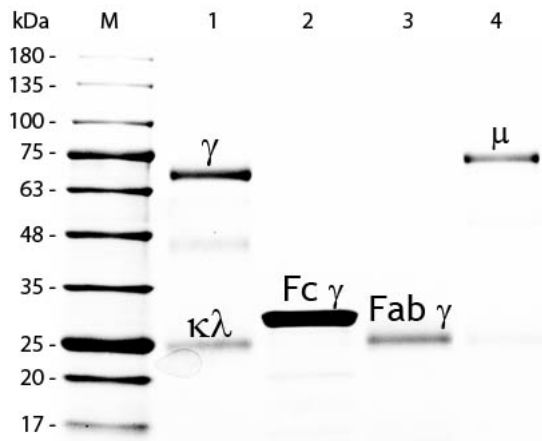
PhysicalState: Lyophilized

Label	Biotin
Buffer	0.02 M Potassium Phosphate, 0.15 M Sodium Chloride, pH 7.2
Reconstitution Volume	1.0 mL
Reconstitution Buffer	Restore with deionized water (or equivalent)
Stabilizer	10 mg/mL Bovine Serum Albumin (BSA) - Immunoglobulin and Protease free
Preservative	0.01% (w/v) Sodium Azide
Storage Condition	Store vial at 4° C prior to restoration. For extended storage aliquot contents and freeze at -20° C or below. Avoid cycles of freezing and thawing. Centrifuge product if not completely clear after standing at room temperature. This product is stable for several weeks at 4° C as an undiluted liquid. Dilute only prior to immediate use.
Synonyms	Chicken IgG F(c) Biotin conjugate, Chicken IgG Fc BAC conjugation
Application Note	Chicken IgG F(c) fragment biotin conjugated is designed for immunofluorescence microscopy, fluorescence based plate assays (FLISA) and fluorescent western blotting. This product is also suitable for multiplex analysis, including multicolor imaging, utilizing various commercial platforms.
Background	Secreted as part of the adaptive immune response by plasma B cells, immunoglobulin G constitutes 75% of serum immunoglobulins. Immunoglobulin G binds to viruses, bacteria, as well as fungi and facilitates their destruction or neutralization via agglutination (and thereby immobilizing them), activation of the complement cascade, and opsinization for phagocytosis. This antibody possesses the F(c) region, recognized by high-affinity Fc receptor proteins.
Purity And Specificity	This product was prepared from normal serum delipidation, salt fractionation, ion exchange chromatography followed by papain digestion and extensive dialysis against the buffer stated above. Assay by immunoelectrophoresis resulted in a single precipitin arc against anti-biotin, anti-Chicken IgG, anti-Chicken IgG F(c) and anti-Chicken Serum. No reaction was observed against anti-Chicken IgG F(ab') ₂ or anti-Papain.
Assay Dilutions	User Optimized
Other Assays	User Optimized
Expiration	Expiration date is one (1) year from date of opening.
Related Products	

010-0102	MOUSE IgG whole molecule - 010-0102
610-4302	Anti-MOUSE IgG (H&L) (RABBIT) Antibody Peroxidase Conjugated - 610-4302
611-1302	Anti-RABBIT IgG (H&L) (GOAT) Antibody Peroxidase Conjugated - 611-1302
BSA-50	BOVINE SERUM ALBUMIN - Fraction V (Immunoglobulin and Protease Free) - BSA-50

Images

1	SDS-PAGE of Chicken IgG F(c) Fragment Biotin Conjugated (p/n 003-0603). Lane M: 5 µL Opal Prestained Marker (p/n MB-210-0500). Lane 1: Reduced Chicken IgG Whole Molecule (p/n 003-0102). Lane 2: Reduced Chicken IgG F(c) Fragment Biotin Conjugated (p/n 003-0603). Lane 3: Reduced Chicken IgG Fab Fragment (p/n 003-0105). Lane 4: Reduced Chicken IgM Whole Molecule (p/n 003-0107). Load: 1 µg per lane. Predicted/Observed size: IgG at 72 and 25 kDa; F(c) at 25 kDa; Fab at 25 kDa; IgM at 75 kDa. Observed F(c) Fragment migrates slightly higher. Other bands: Chicken IgG heavy chain alternative splicing variant at approximately 40 kDa in Lane 1.
---	---



Disclaimer

This product is for research use only and is not intended for therapeutic or diagnostic applications. Please contact a technical service representative for more information. All products of animal origin manufactured by Rockland Immunochemicals are derived from starting materials of North American origin. Collection was performed in United States Department of Agriculture (USDA) inspected facilities and all materials have been inspected and certified to be free of disease and suitable for exportation. All properties listed are typical characteristics and are not specifications. All suggestions and data are offered in good faith but without guarantee as conditions and methods of use of our products are beyond our control. All claims must be made within 30 days following the date of delivery. The prospective user must determine the suitability of our materials before adopting them on a commercial scale. Suggested uses of our products are not recommendations to use our products in violation of any patent or as a license under any patent of Rockland Immunochemicals, Inc. If you require a commercial license to use this material and do not have one, then return this material, unopened to: Rockland Inc., P.O. BOX 5199, Limerick, Pennsylvania, USA.