

CHICKEN IgG whole molecule Agarose Conjugated - 003-0050

Code: 003-0050

Size: 10 mg

Product Description: CHICKEN IgG whole molecule Agarose Conjugated - 003-0050

PhysicalState: Suspension of agarose beads

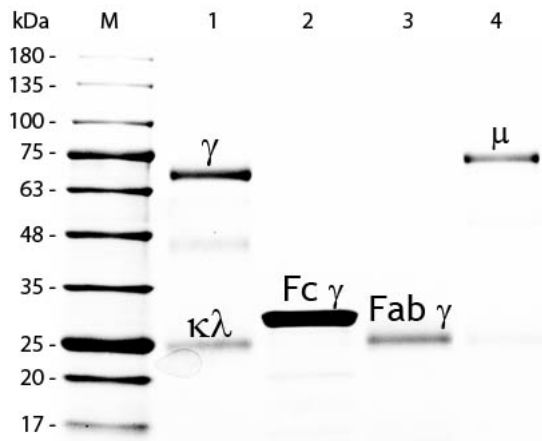
Label	Unconjugated
Buffer	0.01 M Sodium Phosphate, 0.15 M Sodium Chloride, pH 7.2
Stabilizer	None
Preservative	0.01% (w/v) Sodium Azide
Storage Condition	Store vial at 4° C prior to opening. DO NOT FREEZE.
Synonyms	Chicken IgG Whole Molecule Agarose Conjugate, Chicken IgG Agarose
Application Note	Chicken IgG Agarose is suitable for immunoprecipitation and Immunoaffinity purifications.
Background	Chicken IgG whole molecule Agarose Conjugated product is made from IgG, secreted as part of the adaptive immune response by plasma B cells, immunoglobulin G constitutes 75% of serum immunoglobulins. Immunoglobulin G binds to viruses, bacteria, as well as fungi and facilitates their destruction or neutralization via agglutination (and thereby immobilizing them), activation of the complement cascade, and opsinization for phagocytosis. The whole IgG molecule possesses both the F(c) region, recognized by high-affinity Fc receptor proteins, as well as the F(ab) region possessing the epitope-recognition site. Both heavy and light chains of the antibody molecule are present.
Purity And Specificity	This product is an purified Chicken IgG isolated from normal Chicken Serum coupled to activated agarose. Sufficient antibody capacity is provided to bind a minimum of 5 mg of anti-Chicken IgG.
Expiration	Expiration date is one (1) year from date of opening.

Related Products

200-301-268	Anti-AKT pS473 (MOUSE) Monoclonal Antibody - 200-301-268
610-4302	Anti-MOUSE IgG (H&L) (RABBIT) Antibody Peroxidase Conjugated - 610-4302
611-1302	Anti-RABBIT IgG (H&L) (GOAT) Antibody Peroxidase Conjugated - 611-1302
B304	NORMAL GOAT SERUM (NGS) - B304

Images

1	SDS-PAGE of Chicken IgG Whole Molecule Agarose Conjugated(p/n 003-0050). Lane M: 5 µL Opal Prestained Marker (p/n MB-210-0500). Lane 1: Reduced Chicken IgG Whole Molecule Agarose Conjugated (p/n 003-0050). Lane 2: Reduced Chicken IgG F(c) Fragment (p/n 003-0103). Lane 3: Reduced Chicken IgG Fab Fragment (p/n 003-0105). Lane 4: Reduced Chicken IgM Whole Molecule (p/n 003-0107). Load: 1 µg per lane. Predicted/Observed size: IgG at 72 and 25 kDa; F(c) at 25 kDa; Fab at 25 kDa; IgM at 75 kDa. Observed F(c) Fragment migrates slightly higher. Other bands: Chicken IgG heavy chain alternative splicing variant at approximately 40 kDa in Lane 1.
---	---



Disclaimer

This product is for research use only and is not intended for therapeutic or diagnostic applications. Please contact a technical service representative for more information. All products of animal origin manufactured by Rockland Immunochemicals are derived from starting materials of North American origin. Collection was performed in United States Department of Agriculture (USDA) inspected facilities and all materials have been inspected and certified to be free of disease and suitable for exportation. All properties listed are typical characteristics and are not specifications. All suggestions and data are offered in good faith but without guarantee as conditions and methods of use of our products are beyond our control. All claims must be made within 30 days following the date of delivery. The prospective user must determine the suitability of our materials before adopting them on a commercial scale. Suggested uses of our products are not recommendations to use our products in violation of any patent or as a license under any patent of Rockland Immunochemicals, Inc. If you require a commercial license to use this material and do not have one, then return this material, unopened to: Rockland Inc., P.O. BOX 5199, Limerick, Pennsylvania, USA.