

Mouse Monoclonal Antibody to

Phosphothreonine

clone 1E11

Order No.: 0024-100/PTHR-1E11

Size (µg) 100

Lot No.: 0024S



03/160307F

Isotype	Species Reactivity	Applications	Mol. Weight	Ref.Cell Line	Epitope	Immunogen
IgG1	human, mouse, rat, dog	WB, ELISA, IP	pattern			phosphothreonine conjugated to KLH

Background and Specificity:

Phosphorylation and dephosphorylation of cellular proteins are central steps in transducing extracellular signals to the cell nucleus. Phosphorylated epitopes may serve as docking sites for the assembly of protein complexes or may alter the 3-dimensional protein structure thus modulating enzymatic activity or the ability to undergo protein-protein-interactions. Modification of proteins on serine residues is mediated by serine/threonine kinases.

Mab PTHR-1E11 recognizes a broad range of threonine - phosphorylated proteins in crude cell extracts, providing a valuable tool for non-radioactive phosphothreonine detection.

Related Products

mab against Phosphoserine

#0018-100/pSer-1C8

#0019-100/pSer-4A3

#0020-100/pSer-4A9

#0021-100/pSer-4H4

#0022-100/pSer-7F12

#0023-100/pSer-16B4

mab against Phosphothreonine

#0025-100/pThr-4D11

#0026-100/pThr-14B3

Purification: The antibody was purified from serum-free cell culture supernatant by subsequent thiophilic adsorption and size exclusion chromatography.

Formulation: lyophilized from 1 ml 2 x PBS / 0.09 % Na-azide / PEG and Sucrose.

Reconstitution: Reconstitute with 1 ml H₂O (15 min, RT).

Stability: For long-term storage, freeze lyophilizate upon arrival (-20°C). Upon reconstitution, aliquote and freeze in liquid nitrogen; reconstituted antibody can be stored frozen at -80°C up to 1 year. Thaw aliquots at 37°C. Thawed aliquots may be stored at 4°C up to 1 week.

Avoid repeated freeze / thaw cycles.

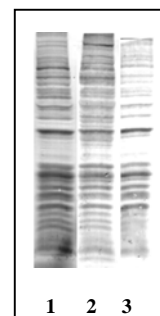
Positive Control: #0901: phosphoserine/phosphothreonine positive control

Immunoblotting: 1 µg/ml for HRPO/ECL detection
Recommended blocking buffer: BSA/Tween 20 based blocking buffer.
DO NOT USE MILK OR CASEIN FOR BLOCKING!

Immunoprecipitation: use at 1 - 10 µg per 10⁶ pervanadate-treated A431 cells

Immunocytochemistry: ND

ELISA: use at 0.05 µg/ml



Phosphothreonine Detection:

A431 cell Lysates probed with
 lane 1 mab 14B3 (IgG), 1 µg/ml
 lane 2 mab 4D11 (IgM), 1 µg/ml
 lane 3 mab 1E11 (IgG), 1 µg/ml

All products are supplied for research and investigational use only. Not for use in humans or laboratory animals.